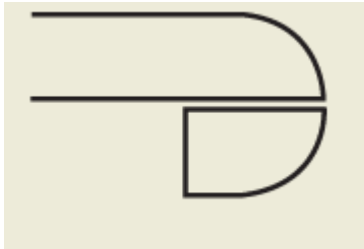
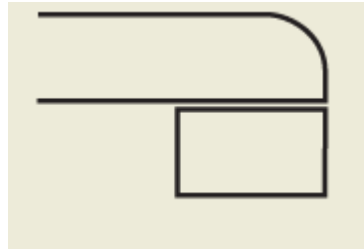


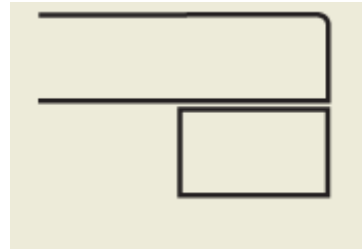
2cm NOSING DETAILS



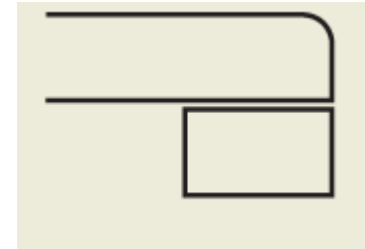
1 1/2" Bull nose



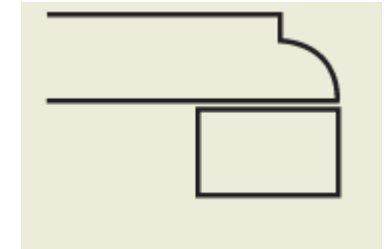
1 1/2" (3/8") Round



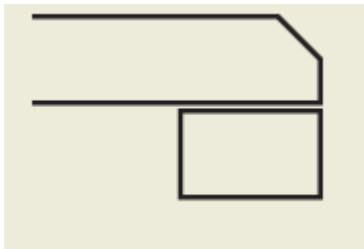
1 1/2" Polished



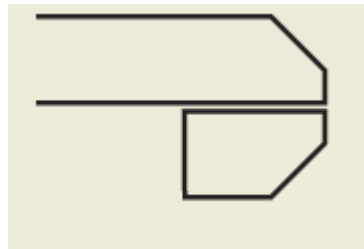
1 1/2" Built-up (1/4") round



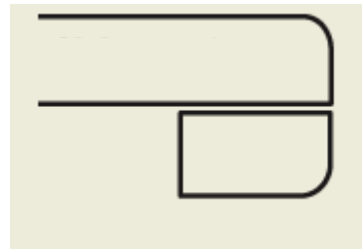
1 1/2" Ogee



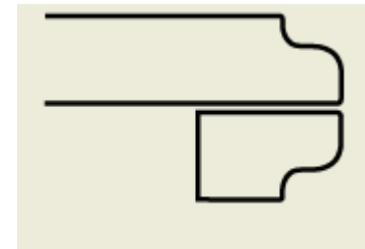
1 1/2" Bevel Top



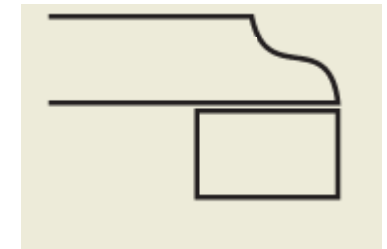
1 1/2" Bevel Top/Bottom



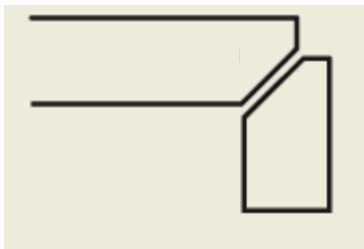
1 1/2" Round Top/Bottom



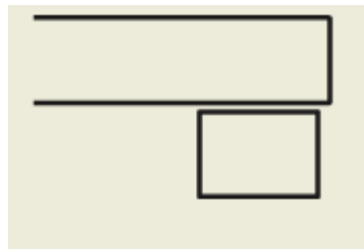
1 1/2" Roman Ogee Reverse



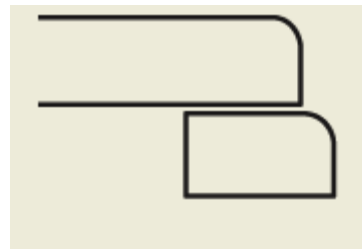
1 1/2" Roman Ogee



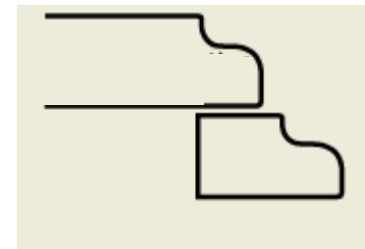
1 1/2" Cork Mitered



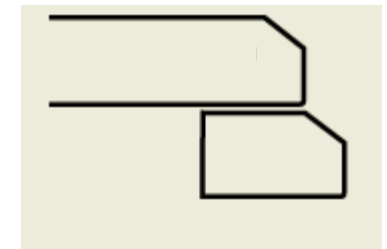
1 1/2" (3/16) Set Back



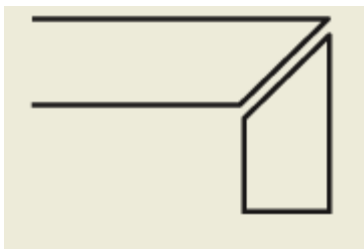
1 1/2" Waterfall



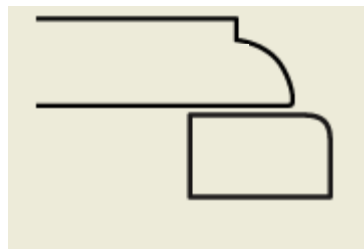
1 1/2" Roman Ogee Waterfall



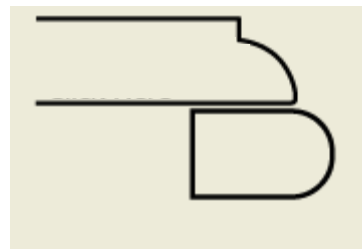
1 1/2" Bevel Step-out



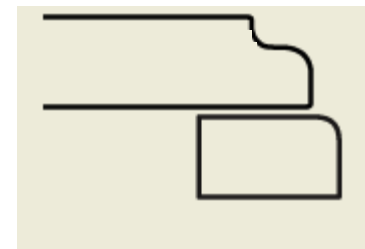
1 1/2" Mitered Edge



1 1/2" Ogee Step-out

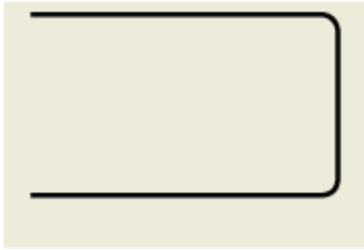


1 1/2" Ogee Bull nose

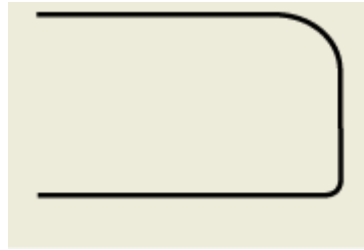


1 1/2" Roman Ogee Step-out

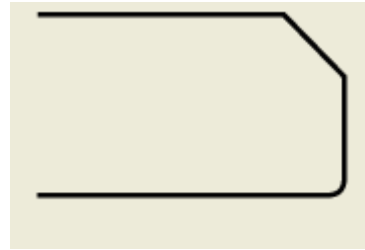
3cm NOSING DETAILS



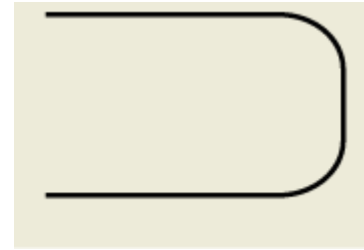
1 1/4" Polished



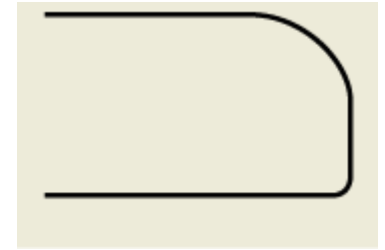
1 1/4" Pencil Round



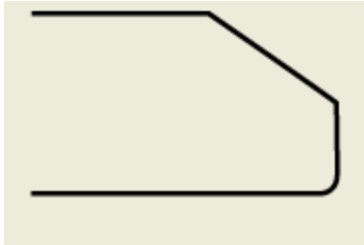
1 1/4" Bevel/Polish



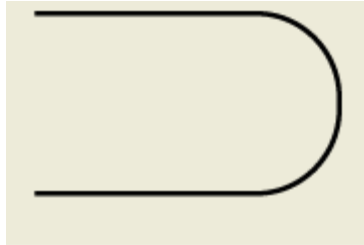
1 1/4" "D"



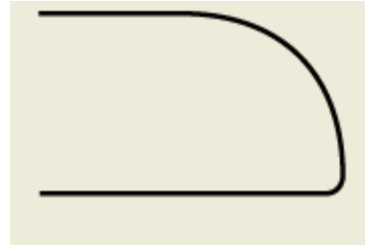
1 1/4" (3/8") Round



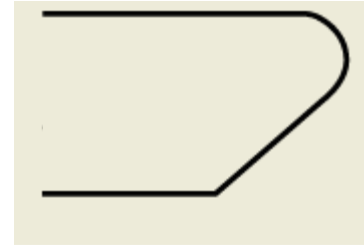
1 1/4" (7/8") Bevel/Polish edge



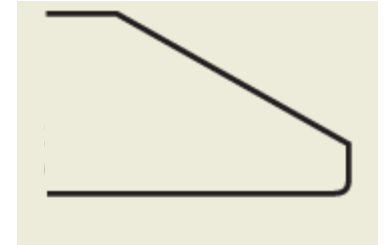
1 1/4" Bull nose edge



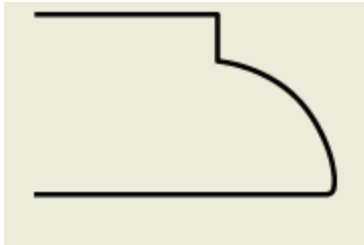
1 1/4" Half Bull nose edge



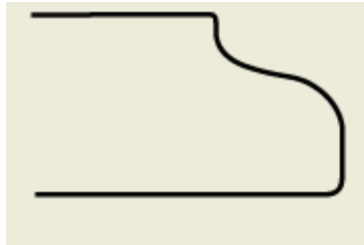
1 1/4" Knife edge



1 1/4" Hollywood bevel



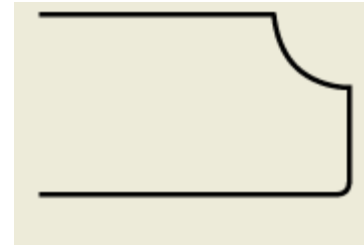
1 1/4" Ogee



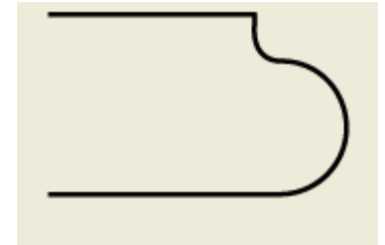
1 1/4" Roman Ogee



1 1/4" Cove Ogee



1 1/4" Cove



1 1/4" Roman Ogee Bull nose